



BESHOFF MOTORS
sports & luxury car specialists

AUTUMN LEAGUE 2012

COURSE CARD



INSHORE COMMITTEE BOAT STARTS

	1	2	3	4	5	6	7
00	Z P W S F	Z W C P W S F	Z W C P W P W C S F	Z W C P C P C S F	Z W C P W P C P S F	Z W C P C P C P W S F	
01	Z P W C S F	Z P W P W S F	Z P W P W P W C S F	Z P W P C U S F	Z P C U P W P W S F	Z P W P W C U C U S F	
02	Z P C S F	Z W C U C S F	Z P C U P C S F	Z W C U C U S F	Z W C U P W P W C U S F	Z W C U C U C U S F	
03	Z W V C S F	Z P W U W S F	Z P W U W C V C S F	Z P W U W U W S F	Z P W U W U W C V S F	Z P W U W U W C V C V C S F	
04	Z W C H S F	Z H W C H C V C S F	Z W C H C H S F	Z W C H W U W C S F	Z W C H C V C H C V C S F	Z W C H C V C H C V C V C S F	
05	Z W C V C S F	Z W C O S F	Z W C O I O S F	Z W C V C O W S F	Z W C O C O V S F	Z W C O I O C O S F	
06	Z W C V C S F	Z W C O S F	Z W C O C S F	Z W C V C O C S F	Z W C O C O S F	Z W C O I O C O S F	
07	Z W C I C S F	Z W C O S F	Z W C O C I C S F	Z W C O I O V S F	Z W C O C O V S F	Z W C O C O C O S F	Z W C O C O C O V S F
08	Z V C D C I S F	Z V C D C D C I S F	Z V W O C D C I S F	Z V C K V W O C I S F	Z V W O W O C I S F	Z V W O W O W O C I S F	
09	Z V C D C I S F	Z V C D C D C I S F	Z V W O C D C I S F	Z V C K V W O C I S F	Z V W O W O C I S F	Z V W O W O W O C I S F	
10	Z V W I V C S F	Z V W I W I V C S F	Z V W D W D V C S F	Z V W D W I W I V C S F	Z V W D W D W D V C S F	Z V W D W D W D W I V C S F	
11	Z V W I V C S F	Z V W I W I V C S F	Z V W D W D V C S F	Z V W D W I W I V C S F	Z V W D W D W D V C S F	Z V W D W D W D W I V C S F	
12	Z V W I W S F	Z V W I W I V C S F	Z V W D W D V C S F	Z V W D W D W S F	Z V W D W D W I W S F	Z V W D W D I W I V C S F	
13	Z V D P S F	Z P I V W S F	Z P D P S F	Z V D P D V W S F	Z V D P D V D V W S F	Z V D P D P D V W S F	
14	Z V P S F	Z V P I P W S F	Z I P I P S F	Z I P V P V P S F	Z V P V P I P S F	Z V P D P D P S F	
15	Z I P S F	Z I W C I P S F	Z I P I P S F	Z I P V P I W C S F	Z I P V P I P S F	Z I P I P I P S F	Z I P I P V P I P S F
16	Z V P S F	Z P C W C S F	Z V P C P S F	Z V P C P C W C S F	Z V P C V P I V W C S F	Z P C P C P S F	Z V P C P C V P C P S F
17	Z I P C S F	Z V P C V W C S F	Z I P C P C S F	Z V P C P C I V S F	Z V P C P C P C S F	Z V P C P C P C I V I V S F	Z V P C P C V P C P S F
18	Z I P C S F	Z V P W H S F	Z V P W P W V U S F	Z I U I U S F	Z V P C I U I H S F	Z V P C I U I U S F	Z I U I U I V P W P C S F
19	Z I H S F	Z V P W P W S F	Z V U C U C S F	Z V U C U C V S F	Z V U C U C H S F	Z V U C U C U S F	
20	Z V U C I S F	Z V H C H C S F	Z V U C H C I S F	Z V U C U C I S F	Z V U C H V U C I S F	Z V U C U C U C S F	Z I U C U C U C I S F
21	Z I H C S F	Z I H C H C S F	Z V H C H C V C S F	Z V H C H C H C S F	Z V U W U W V H C S F	Z V H C H C H C H C S F	Z I U C U C U C I S F
22	Z I H C S F	Z V U W U W S F	Z V H C V C U W S F	Z V U W U W U W S F	Z V H C V C U W U W S F	Z V H C H C U W U W S F	
23	Z V H W S F	Z V H W H W S F	Z V U W U W S F	Z V H C V C U W S F	Z V U C U C U C S F	Z V H C H C U W U W S F	Z V U W U W U W U W S F
24	Z V H W S F	Z V H W H W S F	Z V H W O C S F	Z V H W H W O S F	Z V H W O C O S F	Z V H W H W O C O S F	Z V H W H W O C O I S F
25	Z I D C D Y S F	Z I D C D C D Y S F	Z I O W I D C D Y S F	Z I O W O W I D Y S F	Z I O W O W I D C S F	Z I O W O W I D C D C S F	
26	Z I D C D C S F	Z I D C D C D Y S F	Z I O W I D C D Y S F	Z I O W O W I D Y S F	Z I O W O W I D C S F	Z I O W O W I D C D C S F	
27	Z I D C D C S F	Z I D C D C D Y S F	Z I O W I D C D Y S F	Z I O W O W I D Y S F	Z I O W O W I D C S F	Z I O W O W I D C D C S F	
28	Z C D W S F	Z C D W I W S F	Z C I W I W C I W S F	Z I D W D W C I W S F	Z C D W D W C D W S F	Z I K W C D W C D W S F	
29	Z C D W S F	Z C D W I W S F	Z C I W I W C I W S F	Z I D W D W C I W S F	Z C D W D W C D W S F	Z I K W C D W C D W S F	
30	Z C D W S F	Z C D W I W S F	Z C I W I W C I W S F	Z I D W D W C I W S F	Z C D W D W C D W S F	Z I K W C D W C D W S F	
31	Z C I P S F	Z C I P W C W C S F	Z C I P I P W C S F	Z C I P I P W C W S F	Z C I P V P I P S F	Z C I P V P I P V P S F	
32	Z C I P S F	Z C I P W C W C S F	Z C I P I P S F	Z W C I P I P W C W C S F	Z C I P I P I P S F	Z C I P I P I P I V S F	
33	Z W C W C W C S F	Z C I P W C W C S F	Z C I P I P S F	Z W C I P I P W C W C S F	Z C I P I P I P S F	Z C I P I P I P I V S F	
34	Z W C P W C S F	Z C P C W C S F	Z W C P C P C W S F	Z W C P C P C P S F	Z W C P C P C P S F	Z W C P C P C P C P S F	
35	Z W C P W C S F	Z W C P W C W C S F	Z W C P C P S F	Z W C P C P C W S F	Z W C P C P C P C W S F	Z W C P C P C P C P S F	
40	Z W g L F	Z W g L Z L F	Z W g L Z L Z W g L F	Z W g L Z L Z W g L Z L F	Olympic Course: Wg = Gybe Mark		
50	Z O f L F	Z O f L Z O f L F	Z O f L Z O f L Z O f L F	Z O f L Z O f L O f L Z O f L F	Windward / Leeward Course: Of = Offset Mark		

All marks are rounding marks except for those in a □ (box) which are passing marks

Marks coloured red shall be rounded / passed to port

Marks coloured green shall be rounded / passed to starboard

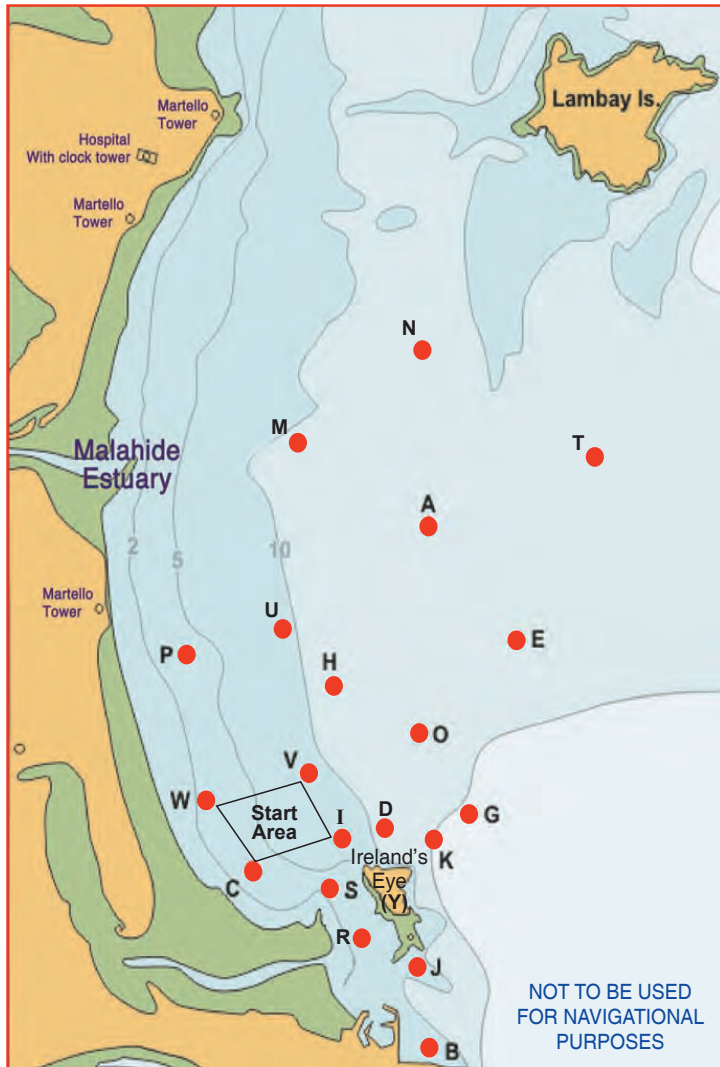
Courses were designed with the aid of Soft Touch Programmes

NAVIGATION MARKS AND OBSTRUCTIONS

The Navigation Marks in and around Howth Sound shall be left as follows:

South Rowan: to be passed to the West and South
 Rowan Rocks: to be passed to the East and South

Any part of Ireland's Eye capable of being touched by a boat while racing is designated as an obstruction to sea room. Competitors are reminded of a trawler wreck in Howth Sound, south of the Carrgran Rocks on Ireland's Eye, which is submerged at most stages of the tide. Boats racing in the vicinity of Baldoyle Spit shall sail North and East of the Spit Mark (S).



Racing Marks 2012 (Approximate)

ID	NAME	SHAPE	COLOUR	DEG	MIN	DEG	MIN
A	Apex	Conical	Black	53	26.76	06	03.26
C	Cush	Conical	Black	53	24.50	06	05.44
D	Dunbo	Conical	Yellow	53	24.73	06	03.85
H	Hub	Conical	Black	53	25.71	06	04.43
I	Island	Conical	Black	53	24.70	06	04.36
K	Stack	Conical	Black	53	24.60	06	03.11
M	Malahide	Conical	Black	53	27.23	06	05.59
O	Osprey	Conical	Orange	53	25.41	06	03.52
P	Portmarnock	Conical	Black	53	25.89	06	06.30
R	South Rowan	IALA	Green	53	23.78	06	03.88
S	Spit	Conical	Black	53	24.35	06	04.48
U	Ulysses	Conical	Orange	53	26.22	06	04.97
V	Viceroy	Conical	Orange	53	25.12	06	04.78
W	West	Conical	Black	53	24.96	06	06.07
X	Xebec	Barrel	Black	53	24.12	06	04.33
Y	Ireland's Eye	Island					
Z	Zephyr	Inflatable	Yellow	Approx. Upwind of Start Line			

COURSE SELECTION

- Courses will be designated by three numeral boards.
- The first two boards will indicate the beat. ie 07 = 070°
- The third board indicates the column number across the top of the page. Therefore Course 073 is the third course in from the left on line 07.

TIDES

	HW	HT	LW
Sunday, September 16th	12.23	4.2m	18.04
Sunday, September 23rd	05.45	3.4m	11.40
Sunday, September 30th	12.22	4.1m	18.06
Sunday, October 7th	16.36	3.4m	10.09
Sunday, October 14th	11.15	4.1m	16.58
Saturday, October 20th	15.46	4.0m	09.12

Row 40 & Row 50

ID	Name	Shape	Colour
D	Distance	Pillar	Orange
Z	Windward	Inflatable	Yellow
Wg	Wing	Round	Yellow
L	Leeward	Round	Orange
Of	Offset	Round	Yellow

2012 Race Marks - Relative Bearings Table - Magnetic (Approx.)

	A	B	C	D	E	G	H	I	J	K	M	N	O	P	Q	S	T	U	V	W
A		186°	216°	196°	146°	168°	220°	207°	188°	184°	295°	002°	192°	250°	185°	203°	071°	248°	215°	229°
B	006°		319°	352°	019°	024°	350°	336°	357°	010°	347°	005°	002°	331°	010°	331°	022°	347°	340°	321°
C	036°	139°		084°	058°	081°	032°	077°	126°	092°	004°	025°	058°	346°	121°	111°	047°	015°	038°	327°
D	016°	172°	264°		043°	078°	347°	272°	170°	110°	344°	011°	023°	315°	161°	233°	036°	342°	312°	287°
E	326°	199°	238°	223°		190°	264°	233°	204°	207°	307°	346°	238°	273°	202°	225°	028°	284°	246°	252°
G	348°	204°	261°	258°	010°		305°	263°	214°	236°	325°	354°	306°	297°	211°	249°	021°	314°	281°	275°
H	040°	170°	212°	167°	084°	125°		191°	168°	151°	342°	021°	125°	285°	164°	187°	055°	334°	205°	238°
I	027°	156°	257°	092°	053°	083°	011°		148°	101°	353°	018°	048°	326°	140°	177°	043°	357°	350°	293°
J	008°	177°	306°	350°	024°	034°	348°	328°		018°	345°	006°	004°	326°	062°	317°	026°	345°	334°	312°
K	004°	190°	272°	290°	027°	056°	331°	281°	198°		337°	003°	350°	310°	190°	259°	028°	332°	304°	288°
M	115°	167°	184°	164°	127°	145°	162°	173°	165°	157°		066°	152°	204°	163°	173°	094°	166°	173°	193°
N	182°	185°	205°	191°	166°	174°	201°	198°	186°	183°	246°		187°	225°	184°	196°	125°	214°	202°	214°
O	012°	182°	238°	203°	058°	126°	305°	228°	184°	170°	332°	007°		292°	180°	215°	040°	319°	256°	260°
P	070°	151°	166°	135°	093°	117°	105°	146°	146°	130°	024°	045°	112°		143°	151°	071°	073°	136°	178°
Q	005°	190°	301°	341°	022°	031°	344°	320°	242°	010°	343°	004°	360°	323°		308°	024°	342°	329°	308°
S	023°	151°	291°	053°	045°	069°	007°	357°	137°	079°	353°	016°	035°	331°	128°		039°	357°	353°	309°
T	251°	202°	227°	216°	208°	201°	235°	223°	206°	208°	274°	305°	220°	251°	204°	219°		249°	229°	236°
U	068°	167°	195°	162°	104°	134°	154°	177°	165°	152°	346°	034°	139°	253°	162°	177°	069°		180°	213°
V	035°	160°	218°	132°	066°	101°	025°	170°	154°	124°	353°	022°	076°	316°	149°	173°	049°	000°		264°
W	049°	141°	147°	107°	072°	095°	058°	113°	132°	108°	013°	034°	080°	358°	128°	129°	056°	033°	084°	