



# ANGLO IRISH

## AUTUMN LEAGUE 2007

### COURSE CARD INSHORE COMMITTEE BOAT STARTS



|    | 1                    | 2                      | 3                        | 4                            | 5                            | 6                              | 7                            |
|----|----------------------|------------------------|--------------------------|------------------------------|------------------------------|--------------------------------|------------------------------|
| 00 | Z P W S F            | Z W C P W<br>S F       | Z W C P W P W<br>C S F   | Z W C P C P C<br>S F         | Z W C P W P C<br>P S F       | Z W C P C P<br>C P W S F       |                              |
| 01 | Z P W C<br>S F       | Z P W P<br>W S F       | Z P W P W<br>P W C S F   | Z P W P C U<br>S F           | Z P C U P W<br>P W S F       | Z P W P W C<br>U C U S F       |                              |
| 02 | Z P C S F            | Z W C U C<br>S F       | Z P C U P C<br>S F       | Z W C U C U<br>S F           | Z W C U P W<br>P W C U S F   | Z W C U C U<br>C U S F         |                              |
| 03 | Z W V C S F          | Z P W U W S<br>F       | Z P W U W C<br>V C S F   | Z P W U W U<br>W S F         | Z P W U W U<br>W C V S F     | Z P W U W U<br>W C V C V C S F |                              |
| 04 | Z W C H S<br>F       | Z H W C H C<br>V C S F | Z W C H C H<br>S F       | Z W C H W U<br>W C S F       | Z W C H C V C<br>H C V C S F | Z W C H C V C<br>H C V C S F   |                              |
| 05 | Z W C V C<br>S F     | Z W C O<br>S F         | Z W C O I<br>O S F       | Z W C V C O<br>W S F         | Z W C O C O<br>V S F         | Z W C O I O<br>C O S F         |                              |
| 06 | Z W C V C<br>S F     | Z W C O<br>S F         | Z W C O C<br>S F         | Z W C V C<br>O C S F         | Z W C O C<br>O S F           | Z W C O I O<br>C O S F         |                              |
| 07 | Z W C I C S F        | Z W C O<br>S F         | Z W C O C<br>I C S F     | Z W C O I O<br>V S F         | Z W C O C<br>O V S F         | Z W C O C O<br>C O S F         | Z W C O C O<br>C O V S F     |
| 08 | Z V C D C I<br>S F   | Z V C D C D<br>C I S F | Z V W O C D<br>C I S F   | Z V C K V W<br>O C I S F     | Z V W O W O<br>C I S F       | Z V W O W O<br>W O C I S F     |                              |
| 09 | Z V C D C I<br>S F   | Z V C D C D<br>C I S F | Z V W O C D<br>C I S F   | Z V C K V W<br>O C I S F     | Z V W O W O<br>C I S F       | Z V W O W O<br>W O C I S F     |                              |
| 10 | Z V W I V C<br>S F   | Z V W I W I<br>V C S F | Z V W D W D<br>V C S F   | Z V W D W I<br>W I V C S F   | Z V W D W D<br>W D V C S F   | Z V W D W D<br>D W I V C S F   |                              |
| 11 | Z V W I V C<br>S F   | Z V W I W I<br>V C S F | Z V W D W D<br>V C S F   | Z V W D W I<br>W I V C S F   | Z V W D W D<br>W D V C S F   | Z V W D W D<br>D W I V C S F   |                              |
| 12 | Z V W I W<br>S F     | Z V W I W I V<br>C S F | Z V W D W D<br>V C S F   | Z V W D W D<br>W S F         | Z V W D W D<br>W I W S F     | Z V W D W D<br>I W I V C S F   |                              |
| 13 | Z V D P S F          | Z P I V W S F          | Z P D P S F              | Z V D P D V<br>W S F         | Z V D P D V D<br>V W S F     | Z V D P D P D<br>V W S F       |                              |
| 14 | Z V P S F            | Z V P I P W<br>S F     | Z I P I P S F            | Z I P V P V P<br>S F         | Z V P V P I P<br>S F         | Z V P D P D P<br>S F           |                              |
| 15 | Z I P S F            | Z I W C I P<br>S F     | Z I P I P S F            | Z I P V P I W<br>C S F       | Z I P V P I P<br>S F         | Z I P I P I P<br>S F           | Z I P I P V P<br>I P S F     |
| 16 | Z V P S F            | Z P C W C<br>S F       | Z V P C P<br>S F         | Z V P C P C<br>W C S F       | Z V P C V P<br>I V W C S F   | Z P C P C P<br>S F             | Z V P C P C V<br>P C P S F   |
| 17 | Z I P C S F          | Z V P C V<br>W C S F   | Z I P C P C<br>S F       | Z V P C P C I<br>V S F       | Z V P C P C<br>P C S F       | Z V P C P C P<br>C I V I V S F | Z V P C P C V<br>P C P S F   |
| 18 | Z I P C S F          | Z V P W H<br>S F       | Z I U I U S F            | Z V P W P W<br>V S F         | Z V P C I U I<br>H S F       | Z V P C I U I<br>U S F         | Z I U I U I V<br>P W P C S F |
| 19 | Z I H S F            | Z V P W P W<br>S F     | Z V U C U C<br>S F       | Z V U C U C<br>V S F         | Z V U C U C<br>H S F         | Z V U C U C<br>U S F           |                              |
| 20 | Z V U C I S F        | Z V H C H C<br>S F     | Z V U C H C<br>I S F     | Z V U C U C<br>I S F         | Z V U C H V U<br>C I S F     | Z V U C U C<br>U C S F         | Z I U C U C<br>U C I S F     |
| 21 | Z I H C S F          | Z I H C H<br>C S F     | Z V H C H C<br>V C S F   | Z V H C H C<br>H C S F       | Z V U W U W<br>V H C S F     | Z V H C H C<br>H C H C S F     | Z I U C U C U<br>C I S F     |
| 22 | Z I H C S F          | Z V U W U W<br>S F     | Z V H C V C<br>U W S F   | Z V U W U W<br>U W S F       | Z V H C V C<br>U W U W S F   | Z V H C H C<br>U W U W S F     |                              |
| 23 | Z V H W S F          | Z V H W H W<br>S F     | Z V U W U W<br>S F       | Z V H C V C<br>U W S F       | Z V U C U C<br>U C S F       | Z V H C H C U<br>W U W S F     | Z V U W U W<br>U W U W S F   |
| 24 | Z V H W S F          | Z V H W H W<br>S F     | Z V H W O C<br>S F       | Z V H W H W<br>O S F         | Z V H W O C<br>O S F         | Z V H W H W<br>O C O S F       | Z V H W H W<br>O C O I S F   |
| 25 | Z I D C D Y<br>S F   | Z I D C D C D<br>Y S F | Z I O W I D C<br>D Y S F | Z I O W O W<br>I D Y S F     | Z I O W O W I<br>D C S F     | Z I O W O W I<br>D C D C S F   |                              |
| 26 | Z I D C D C<br>S F   | Z I D C D C D<br>Y S F | Z I O W I D C<br>D Y S F | Z I O W O W<br>I D Y S F     | Z I O W O W I<br>D C S F     | Z I O W O W I<br>D C D C S F   |                              |
| 27 | Z I D C D C<br>S F   | Z I D C D C D<br>Y S F | Z I O W I D C<br>D Y S F | Z I O W O W<br>I D Y S F     | Z I O W O W I<br>D C S F     | Z I O W O W I<br>D C D C S F   |                              |
| 28 | Z C D W S F          | Z C D W I W<br>S F     | Z C I W I W C<br>I W S F | Z I D W D W<br>C I W S F     | Z C D W D W<br>C D W S F     | Z I K W C D<br>W C D W S F     |                              |
| 29 | Z C D W S F          | Z C D W I W<br>S F     | Z C I W I W C<br>I W S F | Z I D W D W<br>C I W S F     | Z C D W D W<br>C D W S F     | Z I K W C D<br>W C D W S F     |                              |
| 30 | Z C D W S F          | Z C D W I W<br>S F     | Z C I W I W C<br>I W S F | Z I D W D W<br>C I W S F     | Z C D W D W<br>C D W S F     | Z I K W C D<br>W C D W S F     |                              |
| 31 | Z C I P S F          | Z C I P W C W<br>C S F | Z C I P I P W<br>S F     | Z C I P I P W<br>C W S F     | Z C I P V P I<br>P S F       | Z C I P V P I P<br>V P S F     |                              |
| 32 | Z C I P S F          | Z C I P W C W<br>C S F | Z C I P I P<br>S F       | Z W C I P I P<br>W C W C S F | Z C I P I P I P<br>S F       | Z C I P I P I<br>P I V S F     |                              |
| 33 | Z W C W C W<br>C S F | Z C I P W C W<br>C S F | Z C I P I P<br>S F       | Z W C I P I P<br>W C W C S F | Z C I P I P I P<br>S F       | Z C I P I P I P<br>I V S F     |                              |
| 34 | Z W C P W C<br>S F   | Z C P C W<br>C S F     | Z W C P C P<br>C W S F   | Z W C P C P C<br>P S F       | Z W C P C P<br>C P S F       | Z W C P C P C<br>P C P S F     |                              |
| 35 | Z W C P W C<br>S F   | Z W C P W C<br>W C S F | Z W C P C<br>P S F       | Z W C P C P C<br>W S F       | Z W C P C P<br>C P S F       | Z W C P C P<br>C P C P S F     |                              |
| 40 | Z W g L F            | Z W g L Z L F          | Z W g L Z L<br>Z W g L F | Z W g L Z L<br>Z W g L Z L F |                              |                                |                              |

All marks are rounding marks except for those in a  (box) which are passing marks

Marks coloured red shall be rounded/passed to port

Marks coloured green shall be rounded/passed to starboard

Courses were designed with the aid of Soft Touch Programmes

### NAVIGATION MARKS AND OBSTRUCTIONS

The Navigation Marks in and around Howth Sound shall be left as follows-

South Rowan: to be passed to the West and South  
 Rowan Rocks: to be passed to the East and South

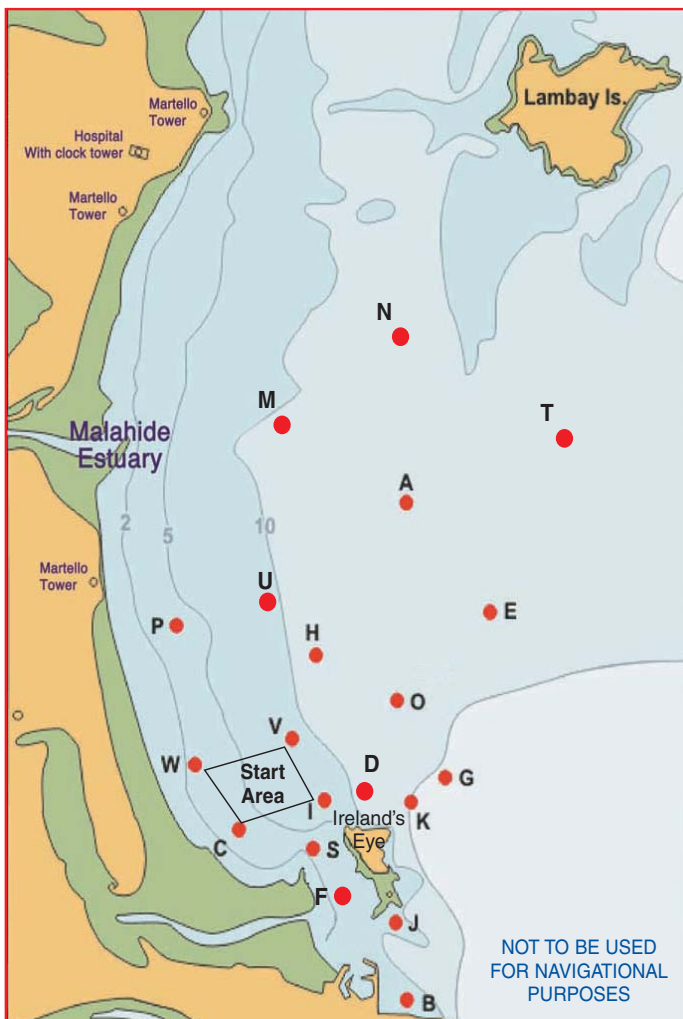
Any part of Ireland's Eye capable of being touched by a boat while racing is designated as an obstruction to sea room.

Competitors are reminded of a trawler wreck in Howth Sound, south of the Carrgran Rocks on Ireland's Eye, which is submerged at most stages of the tide.

Boats racing in the vicinity of Baldoyle Spit shall sail North and East of the Spit Mark (S).

### Racing Marks 2007 (Approximate)

| ID | Name        | Shape       | Colour | Latitude (N)         |       | Longitude (W) |       |
|----|-------------|-------------|--------|----------------------|-------|---------------|-------|
|    |             |             |        | Deg                  | Min   | Deg           | Min   |
| A  | Apex        | Conical     | Black  | 53                   | 26.76 | 06            | 03.26 |
| B  | Balscadden  | Conical     | Orange | 53                   | 23.30 | 06            | 03.26 |
| C  | Cush        | Conical     | Black  | 53                   | 24.50 | 06            | 05.44 |
| D  | Dunbo       | Conical     | Yellow | 53                   | 24.73 | 06            | 03.85 |
| E  | East        | Conical     | Black  | 53                   | 26.00 | 06            | 02.20 |
| F  | Finish      | Cylindrical | Orange | 53                   | 24.12 | 06            | 04.33 |
| G  | Garbh       | Conical     | Black  | 53                   | 25.00 | 06            | 02.32 |
| H  | Hub         | Conical     | Black  | 53                   | 25.71 | 06            | 04.43 |
| I  | Island      | Conical     | Black  | 53                   | 24.70 | 06            | 04.36 |
| J  | Thulla      | Conical     | Black  | 53                   | 23.80 | 06            | 03.40 |
| K  | Stack       | Conical     | Black  | 53                   | 24.60 | 06            | 03.11 |
| M  | Malahide    | Conical     | Black  | 53                   | 27.23 | 06            | 05.59 |
| N  | North       | Conical     | Black  | 53                   | 27.99 | 06            | 03.40 |
| O  | Osprey      | Conical     | Orange | 53                   | 25.41 | 06            | 03.52 |
| P  | Portmarnock | Conical     | Black  | 53                   | 25.89 | 06            | 06.30 |
| Q  | Rowan Rocks | IALA        | Black  | 53                   | 23.88 | 06            | 03.22 |
| R  | South Rowan | IALA        | Green  | 53                   | 23.78 | 06            | 03.88 |
| S  | Spit        | Conical     | Black  | 53                   | 24.35 | 06            | 04.48 |
| T  | Talbot      | Conical     | Black  | 53                   | 27.31 | 06            | 01.30 |
| U  | Ulysses     | Conical     | Orange | 53                   | 26.22 | 06            | 04.97 |
| V  | Viceroy     | Conical     | Orange | 53                   | 25.12 | 06            | 04.78 |
| W  | West        | Conical     | Black  | 53                   | 24.96 | 06            | 06.07 |
| X  | Xebec       | Barrel      | Black  | 53                   | 24.12 | 06            | 04.33 |
| Z  | Zephyr      | Spherical   | Yellow | Upwind of Start Line |       |               |       |



### COURSE SELECTION

- 1). Courses will be designated by three numeral boards.
- 2). The first two boards will indicate the beat. ie 07 = 070°
- 3). The third board indicates the column number across the top of the page.  
Therefore Course 073 is the third course in from the left on line 07.

### TIDES

### HW

|                        |       |
|------------------------|-------|
| Sunday, September 16th | 14.54 |
| Sunday, September 23rd | 9.39  |
| Sunday, September 30th | 14.39 |
| Sunday, October 7th    | 10.02 |
| Sunday, October 14th   | 13.51 |
| Saturday, October 20th | 6.44  |

### Olympic Style Courses - Row 40

| ID | NAME     | SHAPE     | COLOUR |
|----|----------|-----------|--------|
| D  | Distance | Round     | Orange |
| Z  | Windward | Spherical | Yellow |
| Wg | Wing     | Round     | Yellow |
| L  | Leeward  | Round     | Orange |

### Note for row 40

Mark F (Finish Mark) is positioned up-wind of Last mark.  
 Mark L positioned downwind of D

### 2007 Race Marks - Relative Bearings Table - Magnetic (Approx)

|   | A    | B    | C    | D    | E    | G    | H    | I    | J    | K    | M    | N    | O    | P    | Q    | S    | T    | U    | V    | W    |
|---|------|------|------|------|------|------|------|------|------|------|------|------|------|------|------|------|------|------|------|------|
| A |      | 186° | 216° | 196° | 146° | 168° | 220° | 207° | 188° | 184° | 295° | 002° | 192° | 250° | 185° | 203° | 071° | 248° | 215° | 229° |
| B | 006° |      | 319° | 352° | 019° | 024° | 350° | 336° | 357° | 010° | 347° | 005° | 002° | 331° | 010° | 331° | 022° | 347° | 340° | 321° |
| C | 036° | 139° |      | 084° | 058° | 081° | 032° | 077° | 126° | 092° | 004° | 025° | 058° | 346° | 121° | 111° | 047° | 015° | 038° | 327° |
| D | 016° | 172° | 264° |      | 043° | 078° | 347° | 272° | 170° | 110° | 344° | 011° | 023° | 315° | 161° | 233° | 036° | 342° | 312° | 287° |
| E | 326° | 199° | 238° | 223° |      | 190° | 264° | 233° | 204° | 207° | 307° | 346° | 238° | 273° | 202° | 225° | 028° | 284° | 246° | 252° |
| G | 348° | 204° | 261° | 258° | 010° |      | 305° | 263° | 214° | 236° | 325° | 354° | 306° | 297° | 211° | 249° | 021° | 314° | 281° | 275° |
| H | 040° | 170° | 212° | 167° | 084° | 125° |      | 191° | 168° | 151° | 342° | 021° | 125° | 285° | 164° | 187° | 055° | 334° | 205° | 238° |
| I | 027° | 156° | 257° | 092° | 053° | 083° | 011° |      | 148° | 101° | 353° | 018° | 048° | 326° | 140° | 177° | 043° | 357° | 350° | 293° |
| J | 008° | 177° | 306° | 350° | 024° | 034° | 348° | 328° |      | 018° | 345° | 006° | 004° | 326° | 062° | 317° | 026° | 345° | 334° | 312° |
| K | 004° | 190° | 272° | 290° | 027° | 056° | 331° | 281° | 198° |      | 337° | 003° | 350° | 310° | 190° | 259° | 028° | 332° | 304° | 288° |
| M | 115° | 167° | 184° | 164° | 127° | 145° | 162° | 173° | 165° | 157° |      | 066° | 152° | 204° | 163° | 173° | 094° | 166° | 173° | 193° |
| N | 182° | 185° | 205° | 191° | 166° | 174° | 201° | 198° | 186° | 183° | 246° |      | 187° | 225° | 184° | 196° | 125° | 214° | 202° | 214° |
| O | 012° | 182° | 238° | 203° | 058° | 126° | 305° | 228° | 184° | 170° | 332° | 007° |      | 292° | 180° | 215° | 040° | 319° | 256° | 260° |
| P | 070° | 151° | 166° | 135° | 093° | 117° | 105° | 146° | 146° | 130° | 024° | 045° | 112° |      | 143° | 151° | 071° | 073° | 136° | 178° |
| Q | 005° | 190° | 301° | 341° | 022° | 031° | 344° | 320° | 242° | 010° | 343° | 004° | 360° | 323° |      | 308° | 024° | 342° | 329° | 308° |
| S | 023° | 151° | 291° | 053° | 045° | 069° | 007° | 357° | 137° | 079° | 353° | 016° | 035° | 331° | 128° |      | 039° | 357° | 353° | 309° |
| T | 251° | 202° | 227° | 216° | 208° | 201° | 235° | 223° | 206° | 208° | 274° | 305° | 220° | 251° | 204° | 219° |      | 249° | 229° | 236° |
| U | 068° | 167° | 195° | 162° | 104° | 134° | 154° | 177° | 165° | 152° | 346° | 034° | 139° | 253° | 162° | 177° | 069° |      | 180° | 213° |
| V | 035° | 160° | 218° | 132° | 066° | 101° | 025° | 170° | 154° | 124° | 353° | 022° | 076° | 316° | 149° | 173° | 049° | 000° |      | 264° |
| W | 049° | 141° | 147° | 107° | 072° | 095° | 058° | 113° | 132° | 108° | 013° | 034° | 080° | 358° | 128° | 129° | 056° | 033° | 084° |      |