



# HYC PIER COURSE CARD 2009

	1	2		3	4	5	6		7	8
		WEST GOING STARTS				EAST GOING STARTS				
0/0	X[F]BF	X[F]B[F]X[F]	X B X B X F	Y H I K O Y F	J B F	J K I H Y B F	J O I H Y F	J O I H I H Y F		
0/1	X[F]BF	Y H F	Y H V H Y F	Y H I D O Y F	J K F	J K B K F	J O B K F	J K B K I H Y F		
0/2	Y O Y F	Y O D O Y F	Y O D O D O Y F	Y O D O D O D O Y F	J K B F	J K B K F	J K C H Y F	J O B O Y F		
0/3	Y O Y F	Y O D O Y F	Y O D O D O Y F	Y O D O D O D O Y F	J G F	J Y C H Y F	J G B G F	J G B O Y F		
0/4	Y O Y F	Y O D O Y F	Y O I O Y F	Y O H C H Y F	J G F	J K I O Y F	J G I O Y F	J G I O I O Y F		
F-1 E-1 0/5	Y O Y F	Y V C V C F	Y O I O Y F	Y O I O I O Y F	J G F	J Y I O K G Y F	J Y I O I O Y F	J Y I O I O K G F		
F-1 E-1 0/6	Y D X D Y F	Y D X D X D Y F	Y D V C O Y F	Y O I O I O Y F	J Y I O F	J Y I O K G F	J Y I O I O Y F	J Y I O I O K G F		
F-1 E-1 0/7	I C D Y F	I C I C D Y F	I C I C I C D Y F	I C D C D C D Y F	J Y I G F	J Y V O K G F	J Y C O K G F	J Y I G I V O K G F		
F-1 E-1 0/8	I C D Y F	I C I C D Y F	I C I C I C D Y F	I C D C D C D Y F	J Y C K F	J Y C G F	J Y V O I G F	J Y W O I G F		
F-1 E-1 0/9	I C D Y F	I C I C D Y F	I C I C I C D Y F	I C D C D C D Y F	J Y C K F	J Y C G F	J Y C K C K F	J Y I G C G F		
F-1 E-1 1/0	C D Y F	V W I V C F	V W D V C F	V W I W D C F	J Y I K F	J Y W Y F	J Y W K I K F	J Y V G I W Y F		
F-1 E-1 1/1	C F	V W I V C F	V W D V C F	V W I W D C F	J Y I K F	J Y W K F	J Y W K I K F	J Y V G W K F		
F-1 E-1 1/2	W F	W I V C F	W D W F	W I W I W F	J Y V K F	J Y W K F	J Y W K I K F	J Y W K W K F		
F-1 E-1 1/3	B[F]X[F]B F	B X[F]B[F]X F	B X B X B F X F	B X B X B F X F	J Y V Y F	J Y V K I Y F	J Y V K V Y F	J Y H G W Y F		
F-1 E-1 1/4	B[F]X[F]B F	B X[F]B[F]X F	B X B X B F X F	B X B X B F X F	J Y V Y F	J Y V K V Y F	J Y H G V Y F	J Y H G V K I Y F		
1/5	B[F]X[F]B F	B X[F]B[F]X F	B X B X B F X F	B X B X B F X F	B Y V Y F	B Y V I H Y F	B Y H K V Y F	B Y H K V I V I Y F		
1/6	B[F]X[F]B F	B X[F]B[F]X F	B X B X B F X F	B X B X B F X F	B Y V Y F	B Y V I H Y F	B Y H K V Y F	B Y H K V I H Y F		
1/7	B[F]X[F]B F	B X[F]B[F]X F	P C V F	B X B X B F X F	B K B F	B Y H Y B F	B Y V I H Y B F	B Y H K H K B F		
1/8	B[F]X[F]B F	B X[F]B[F]X F	B X B X B F X F	B X B X B F X F	J K B F	J K B K B F	J Y H I O Y B F	J Y H I H I K B F		
1/9	Y H Y F	Y O D O Y F	Y H I D O Y F	Y H X O Y F	J K B F	J K B K B F	J Y H I O Y B F	J Y H I H I K B F		
2/0	Y O Y F	Y H C F	Y H C V C F	Y H C I O Y F	J K B F	J K B K B F	J Y H C V K B F	J Y H C O Y B F		
2/1	Y O Y F	V C V C F	V C I O Y F	V C I V C I V C F	J G B F	J G B K Y F	J Y H C V G Y F	J Y H C O Y B F		
F-1 E-1 2/2	Y O Y F	V C V C F	V C V C D Y F	V C V C I V C F	J G F	J O I G F	J O I G B F	J O I O I G F		
F-1 E-1 2/3	Y O Y F	V C V C F	V C V C D Y F	V C O C D Y F	J O I Y F	J O I G K F	J O C G K F	J O I O I G K F		
F-1 E-1 2/4	Y O Y F	Y O C F	V C V C D Y F	Y O C H W F	J O I Y F	J O I G K F	J O C G K F	J O I O I G K F		
F-1 E-1 2/5	Y D C F	Y D C I C F	Y D C I V W F	Y D C I V W W F	J G I K F	J G C K F	J G I G I K F	J G C O V K F		
F-1 E-1 2/6	Y D C F	Y D C I C F	Y D C I V W F	Y D C I V W W F	J Y C K F	J G C K F	J Y C K C K F	J G C G I K F		
F-1 E-1 2/7	Y D C F	Y D C I C F	Y D C I V W F	Y D C I V W W F	J Y C K F	J G C K F	J Y C K C K F	J G C K C K F		
F-1 E-1 2/8	Y I W F	Y D W F	Y I W I W F	Y D W D W F	J Y W K F	J Y W K I K F	J Y C G V Y F	J Y W K K I Y F		
F-1 E-1 2/9	W F	Y D W F	Y I W I W F	Y D W D W F	J Y W Y F	J K V K I Y F	J Y W K V Y F	J Y W K V K I Y F		
F-1 E-1 3/0	W F	W[F]B F	X B X B X B F	X B X B X B F	J Y W Y F	J K V K V Y F	J Y W K V Y F	J Y W K V K I Y F		
F-1 E-1 3/1	X[F]B F	X[F]B[F]X[F]	X B X B X B F	X B X B X B F	J K V Y B F	J Y I K V Y B F	J K V K V Y B F	J Y I K V K V Y B F		
F-1 E-1 3/2	X[F]B F	X[F]B[F]X[F]	X B X B X B F	W C W C W F	J Y V Y B F	J Y V C W Y B F	J Y V K H Y B F	J Y P C W Y B F		
3/3	X[F]B F	X[F]B[F]X[F]	W C W F	W C W C W F	J Y V Y B F	J Y V C W Y B F	J Y V I K H Y B F	J Y P C W Y B F		
3/4	X[F]B F	X[F]B[F]X[F]	X B X B X B F	X B X B X B F	J Y H Y B F	J Y H V I V I Y B F	J Y V I K H Y B F	J Y H V I K H Y B F		
3/5	X[F]B F	X[F]B[F]X[F]	X B X B X B F	X B X B X B F	J Y H Y B F	J Y H W K Y B F	J Y H I H I V D Y B F	J Y H C P Y B F		

All marks are rounding marks except for those in a  (box) which are passing marks  
 Marks coloured red shall be rounded/passed to port  
 Marks coloured green shall be rounded/passed to starboard  
 Courses were designed with the aid of Soft Touch Programmes

# HYC WEDNESDAY / SATURDAY COMMITTEE BOAT COURSE CARD 2009

	1	2	3	4	5	6
00	Z W I H I F	Z W C P W I F	Z U P W P C I F	Z C I U I H C I F	Z C I U P W P W C I F	Z W C I U I U P C I F
01	Z W C P W C F	Z W C U P W C F	Z W C U V H P W C F	Z W C U P W P W C F	Z W C U C I H P W C F	Z W C U C I H I H P W C F
02	Z C H W C F	Z W C H W C F	Z W C H C V W C F	Z W C H C H W C F	Z W C U C H W C F	Z W I C H C H C U W C F
03	Z W C H C F	Z W C H W C F	Z W C H C V W C F	Z W C H C H W C F	Z W C U C H W C F	Z W C H C H C U W C F
04	Z C H W C F	Z W C H W C F	Z W C H C V W C F	Z W C H C H W C F	Z W C H C V C H W C F	Z W I E I E W C F
F-1 E-1 05	Z W C V W C F	Z W C O W C F	Z W C O H W C F	Z W C H W H W C F	Z W C O H W H W C F	Z W C O I E W C F
F-1 E-1 06	Z V W H W C F	Z W C O V C F	Z H W C O V C F	Z V W C O I O V C F	Z W C O C O V C F	Z O H W C O C O H W C F
F-1 E-1 07	Z V W H W C F	Z V C D C D V C F	Z V W H W H C F	Z V W C O C O V C F	Z O H W C O C O V C F	Z W C O C E W C F
F-1 E-1 08	Z V C D V C F	Z V C D C D V C F	Z V W O W V W C F	Z V C D V W O W C F	Z V W O U W O W C F	Z W C G H W O W C F
F-1 E-1 09	Z V C D V C F	Z V W V W V W C F	Z V C D C D V W C F	Z V W O W V W C F	Z V W O C K V C F	Z V W O W C G V W C F
F-1 E-1 10	Z V W I V W F	Z V W I W I V W F	Z V W D W I V W F	Z D V W D W I V W F	Z V W D W K V W F	Z V W D W D V W D W F
F-1 E-1 11	Z V W I V W F	Z V W D V W F	Z V W I W I V W F	Z D V W D W I V W F	Z V W D W K V W F	Z V W D W D V W D V W F
F-1 E-1 12	Z V W I V W F	Z V W I W I V W F	Z V W I W V W F	Z V W D W D H W F	Z V W D W D W I W F	Z V W D W D V W K W F
F-1 E-1 13	Z P I V W F	Z H P I V W F	Z H P D V W F	Z H P D V D V W F	Z V P D O U H W F	Z H P D P D V W F
F-1 E-1 14	Z V W C W C W F	Z H P I V W F	Z H P D V W F	Z V P I V W C V W F	Z I P I P I W F	Z V P D P D H W F
15	Z V W C V W F	Z V P I V W F	Z I P D V W F	Z I P I V W C V W F	Z V P I P I V W F	Z V P D P D H W F
16	Z V P C V F	Z P C W C V F	Z V P C W C V F	Z V P C P C V F	Z I U D H P C Y F	Z I U D H P C V F
17	Z V P C V F	Z V P C V I V F	Z V P W P C V F	Z V P C P C V F	Z V P C I H I O H V F	Z V P C I U I U V F
18	Z V P W V F	Z V P W P W V F	Z V P W P C V F	Z V P C I H I H V F	Z V P C I U I H V F	Z V P C I U I U V F
19	Z I H I H V F	Z V P W P W V F	Z V P W H I H V F	Z V P W C H H V F	Z I U C U C H V F	Z V P W U C U C V F
20	Z I H C I V F	Z I H C H V F	Z I H C H C I V F	Z I H C H C I H V F	Z I U W U W I H V F	Z I U W U W I H C I V F
21	Z I H C I V F	Z I H C H V F	Z I H C V C I H V F	Z I H C U W C I V F	Z I U W U W C I H V F	Z I U W U W I H C I V F
F-1 E-1 22	Z V C V C V F	Z I V C V C I V F	Z I H C V C I V F	Z I H C V C I H V F	Z I H C U W I H V F	Z I U W U W I H V F
F-1 E-1 23	Z V C V C V F	Z C O C V F	Z C O C O I V F	Z C H W H W C V F	Z C O C V C O I V F	Z C O C O C O C V F
F-1 E-1 24	Z C H W C V F	Z C V C O I V F	Z C H W C O I V F	Z C O C O H W C V F	Z I H W H W C O I V F	Z C O C O H W W C V F
F-1 E-1 25	Z C D C I V F	Z I H W C I V F	Z C O C O V F	Z I O C O C I V F	Z C O C O C O V F	Z I H W H W C O I V F
F-1 E-1 26	Z I V W C V F	Z C V W W C V F	Z C D C D C I V F	Z C D C D C O V F	Z C O W O W C I V F	Z C O W O W C D C I V F
F-1 E-1 27	Z C V W C V F	Z C V W W C V F	Z C D C D C I V F	Z C O W C D C I V F	Z C O W O W C I V F	Z C O W O W C D C I V F
F-1 E-1 28	Z C I W C I F	Z C I W I W C I F	Z C D W I W C I F	Z C D W D W C I F	Z C D W K W C I F	Z C K W K W C D I F
F-1 E-1 29	Z C I W C I F	Z C I W I W C I F	Z C D W I W C I F	Z C D W D W C I F	Z C D W K W C I F	Z C K W K W C D I F
F-1 E-1 30	Z C I W C I F	Z C I W I W C I F	Z C D W I W C I F	Z C D W D W C I F	Z C D W K W C I F	Z C K W K W C D I F
F-1 E-1 31	Z C D V C I F	Z C I P C I F	Z C D V K V C I F	Z C D P D V C I F	Z C K P D V C I F	Z C D P D P C I F
F-1 E-1 32	Z W C W C I F	Z P W C W C I F	Z W C I P W C I F	Z I P I P W C I F	Z C I P I P W C I F	Z W C I P P V P W C F
33	Z W C W C I F	Z P W C W C I F	Z W C I P W C I F	Z P W C I P W C I F	Z C I P I P W C I F	Z W C I P P V P W C F
34	Z W C W C I F	Z W C P C I F	Z W C W C P C I F	Z W C P C P W C I F	Z P W C P C P W C I F	Z W C P C P C P W C I F
35	Z C I V C I F	Z W C P C I F	Z W C P I V C I F	Z W C P C P W C I F	Z C I U I U C I F	Z C D H D H W C P C I F
40	Z Gy L F	Z Gy L Z L F	Z Gy L Z L Z Gy L F	Z Gy L Z L Z Gy L Z L F		
50	Z Wg L F	Z Wg L Z Wg L F	Z Wg L Z Wg L Z Wg L F	Z Wg L Z Wg L Z Wg L F		

Mark F on Wednesday / Saturday Committee boat courses refers to the Orange Finish Mark (S. I. 25)  
 All marks are rounding marks except for those in a  (box) which are passing marks  
 Marks coloured red shall be rounded/passed to port  
 Marks coloured green shall be rounded/passed to starboard  
 Courses were designed with the aid of Soft Touch Programmes

Excerpts from 2009 Sailing Regulations

1 - SAFETY

Competitors in all classes (keelboat and dinghy) shall wear lifejackets or suitable personal flotation devices at all times. Wet suits and dry suits are not suitable personal flotation devices. It is strongly recommended that every keelboat carries a VHF radio.

8 - MANAGEMENT OF RACES

Where relevant, information may be transmitted on VHF radio. Channel M (37A) shall be used. A boat that infringes a rule at or near the finishing line and retires shall notify the PRO of its retirement as soon as possible.

11 - PENALTY FOR BREAKING A RULE OF PART 2

RRS 44.1 'Taking a Penalty' and RRS 44.2 'Two Turns Penalty' shall apply.

13 - ASSISTANCE

The attention of all competitors is drawn to RRS Fundamental Rule 1.1. 'Helping Those in Danger'. If appropriate, the provisions of RRS 62 may be invoked. All boats with VHF radios are required to keep a listening watch on Channel 16 when at sea.

18 - STARTING TIMES FOR CLUB RACES

Races will be started as per RRS 26 with the warning signal given 5 minutes before the starting signal. A countdown from 1 minute before each start may be given on VHF radio. A boat shall not start later than 15 minutes after her valid starting signal. Starting times are as follows:

Table with columns: Class, Flag, Start, Class, Flag, Start. It details start times for various classes (KEELBOATS, Wednesday, Tuesday, Saturday, Sunday) and includes a note about substitutions.

19 - TIME LIMITS

The time limit for each keelboat race is as follows:

Table with columns: Day, Dates, Time Limit, Day, Dates, Time Limit. It lists time limits for Tuesday, Wednesday, and Saturday races.

20 - KEELBOAT STARTING AREA, PIER STARTS

The starting area is defined as being bounded by an imaginary line drawn from the new lighthouse to the South Rowan Buoy, to the elbow of the East Pier. In cruiser classes, no boat shall enter this area between the time of the warning signal for the first of the series of starts and that class's warning signal.

21 - KEELBOAT STARTING AREA, COMMITTEE BOAT STARTS

The starting area is defined as being an imaginary line drawn from the Island Mark, to the Cush Mark, to the West Mark, to the Viceroy Mark, to the Island Mark. Boats shall keep clear of the starting line until their warning signal.

22 - KEELBOAT STARTING LINE, PIER STARTS

The starting line shall be one of the following, identified by a letter A, B or C displayed on the Starter's Hut/Committee Boat: Starting Line A: A line between the red vertical line on the starter's hut and the South Rowan Buoy. Starting Line B: A line between the red vertical line on the starter's hut and Finish Mark F or the red and white pole/mainmast on the Committee Boat. Starting Line C: A line between the red vertical line on the starter's hut and the Howth Mark.

23 - KEELBOAT STARTING LINE, COMMITTEE BOAT STARTS

The starting line shall be between the red and white pole/mainmast on the Committee Boat and an Outer Distance Mark, an orange buoy, which shall be left to port when starting. The Race Committee may adjust the starting line up to three minutes before the start of a race. This changes RRS 27.2. Should flag D be displayed at the East Pier starter's hut, Committee Boat and/or the Committee Boat and/or the marina bridge, accompanied by one sound signal, pier starts and relevant regulations will be substituted for offshore committee boat starts.

24 - KEELBOAT PIER FINISHING LINE

The finishing line shall be between the Finish Mark F and the red vertical line on the East Pier starter's hut. Should the Committee Boat be on station at the Finish Mark (F) then the finishing line shall be between the red and white pole/mainmast on the Committee Boat displaying a blue flag and the red vertical line on the East Pier starter's hut.

25 - KEELBOAT COMMITTEE BOAT FINISHING LINE

(A) The finishing line shall be a line between the red and white pole or main mast of the Committee Boat, displaying a blue flag and an orange Finish Mark, which shall be left to port. (B) Unless the course is shortened, the finish line for Wednesday Night Races is located approximately upwind of the last fixed mark on the course. (C) Unless the course is shortened, the finish line for Tuesday Night Races is between the red and white pole / mainmast of the Committee Boat, displaying a blue flag, moored in the vicinity of the X/ Island mark and an orange Finish Mark which shall be left to port.

29 - NAVIGATION MARKS/OBSTRUCTIONS, KEELBOATS

In keelboat classes the navigation marks in and around Howth Sound shall be left as follows after a boat's starting signal: South Rowan Buoy: to be passed to the south and west. Howth Mark: not a mark on any course except as in Regulation 22 (C). Rowan Rocks Buoy: to be passed to the east and south. Spit Mark: to be passed to the north and east. Where the Thulla and Finish Mark (except when finishing) are described as marks on the course, they shall be passed to the south. Any part of Ireland's Eye capable of being touched by a boat, while racing, is designated as an obstruction to sea room. The attention of competitors is drawn to the existence of many underwater hazards in the vicinity of Ireland's Eye, Howth Sound and over the Spit Bank. Should they choose to sail amongst these hazards, they do so at their own risk. The Club accepts no responsibility for the consequences of any such deviation from the set courses.

31 - ABANDONMENT/POSTPONEMENT

Abandonment before the starting signal/Postponement shall be as per RRS 27.3. Flag signals will be made from the Committee Boat, starter's hut or the top of the marina bridge, as relevant.

32 - INDIVIDUAL RECALLS - Individual recalls shall be as per RRS 29.1.

33 - GENERAL RECALLS - General recalls shall be in accordance with RRS 29.2.

34 - ABANDONMENT AFTER THE START

Abandonment of a race after the start shall be as per RRS 32.1. However, if not all races are being abandoned flag N shall be displayed over the class flag of the classes affected.

35 - FINISHING A RACE

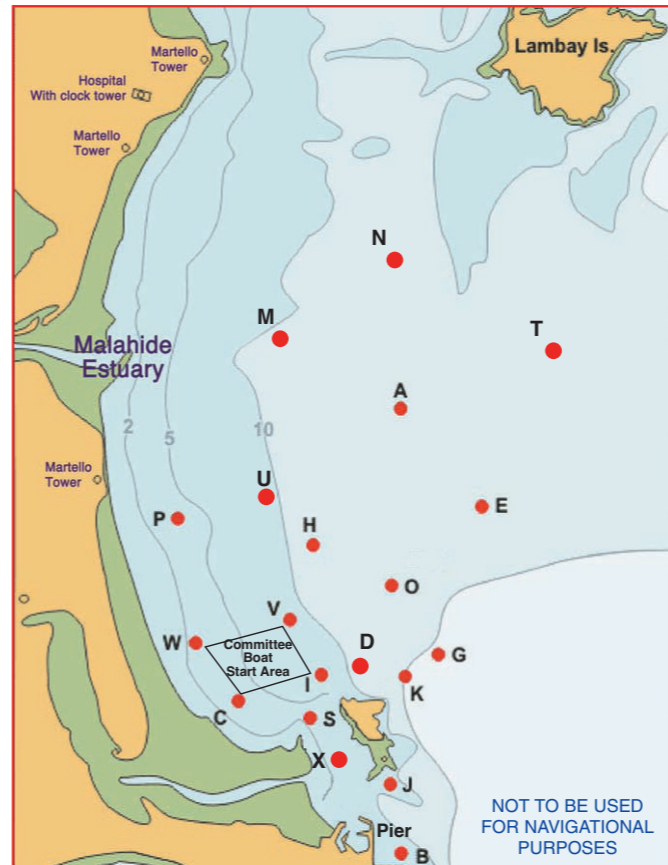
Keelboats having finished shall not cross their own finishing line in the opposite direction while a course board is still displayed except for some unavoidable cause. Any so doing may be disqualified.

36 - NOTIFICATION OF COURSE

RRS 27.1 is changed as follows: - The course board(s) shall be displayed for each class following its warning signal and shall be displayed for not less than 4 minutes before the start. If a change of starting line is required after the warning signal, there shall be a postponement.

37 - KEELBOATS SHORTENED COURSE

The PRO may at his/her discretion decide to shorten a race. The procedure will be either: - A Finish Boat will be positioned at the mark on the course at which the race is to be finished. When on station the boat will display a blue flag. Flag S will be displayed and two sound signals made as the leading boat approaches the mark at which the race is to be finished. Boats shall finish between the Finish Boat and the relevant mark. Flag S displayed alone signals that all races not yet finished are shortened, flag S over class flag(s) signals that races for the relevant classes are shortened. For courses that prescribe a leg passing up or down the Sound, the PRO may decide to shorten the race using the East Pier finishing line. Flag S will be displayed and two sound signals made as the leading boat approaches the finishing line. Flag S displayed alone signals that all races not finished are shortened. Flag S over class flags signals that races for the relevant classes are shortened.



Race Marks 2009 - Relative Bearings - Magnetic (approx)

Large table with columns A through X and rows A through X, providing magnetic bearings between race marks.

Table titled 'HIGH WATER HOWTH (BST) - 2009' with columns for months (April, May, June, July, August, Sept.) and rows for days (1-31).

Course Selection- Pier Starts

On the starter's hut, the two course boards displayed on the left side indicate the line on the Course Card (and wind direction), the third number which is positioned on the lower right side indicates the column number across the top of the card. The letter, which is positioned in the upper right side, indicates the starting line in operation (as per Sailing Regulation 22). Where Committee Boat is used for Pier Starts, the Course displayed for e.g. 021 shall be read from the Pier Course Card as e.g. 0 2 1.

MARK DESCRIPTIONS/POSITIONS (Approx)

Table with columns: ID, Name, Shape, Colour, Latitude (N) Deg/Min, Longitude (W) Deg/Min. Lists marks A through Z with their respective details.

Note: Mark F on Committee Boat courses refers to the Orange Finish mark (Reg. 25)

Table titled 'Row 40 Course Diagram' showing Olympic Style Courses - Row 40 with columns ID, NAME, SHAPE, COLOUR and a diagram of the course layout.

Table titled 'Row 50 Course Diagram' showing Windward / Leeward Style Courses - Row 50 with columns ID, NAME, SHAPE, COLOUR and a diagram of the course layout.