



TUESDAY COMMITTEE BOAT COURSE CARD 2009

		1	2	3	4	5	6
	00	Z W I H I F	Z W C P F F	Z U P W P F	Z C I U I H C F	Z C I U P W P C	Z W C I U I U P
	01	Z W C P F F	Z U I H F	Z W C U V H F	Z W C U V H I H	Z W C U C I H I	Z W C U C I H I
	02	Z C H C F	Z W C H C F	Z W C H C V C	Z W C H C H C	Z W C U C H C	Z W C U C H C U
	03	Z C H C F	Z W C H F	Z W C H C V C	Z W C H C H F	Z W C U C H F	Z W C H C H C H
	04	Z C H F	Z W C H F	Z W C H C V C F	Z W C H C H F	Z W C H C V C	Z W I E I E F
F-1	05	Z W C V C F	Z W C O F	Z W C O C V C F	Z W C H W H	Z W C O H W H	Z W C O C O C
E+1	06	Z V W H V F	Z W C O F	Z O H C O F	Z V C O C O F	Z V C O C O C	Z O H C O C O
F-1	07	Z V W H C F	Z V C D C D C F	Z V W H W H C F	Z V C O C O C	Z O H C O C O	Z V W C O C E
E+1	08	Z V C D C F	Z V C D C D C F	Z V W O W V C	Z V C D V W O	Z V W O W O	Z V W C G H W O
F-1	09	Z V C D C F	Z V W V W V W	Z V C D C D V W	Z V W O W V W	Z V W O W O C	Z V W O W O C
E+1	10	Z V W I C F	Z D W D C F	Z V W D W I C F	Z D V W D W I	Z V W D W K C	Z V W D W D V
F-1	11	Z V W I C F	Z V W D V C F	Z V W I W I C F	Z D V W D W I	Z V W D W K C	Z V W D W D V
E+1	12	Z V W I C F	Z V W I W I C F	Z V W I W I C F	Z V W D W D C F	Z V W D W D W I	Z V W D W D V
F-1	13	Z P I V C F	Z H P I V C F	Z H P D V C F	Z H P D V D V C	Z V P D O U O	Z H P D P D V
E+1	14	Z V W C W C W	Z H P I V W F	Z H P D V W F	Z V P I V W C V	Z I P I P I V W F	Z V P D P D H W
F-1	15	Z V W C V W F	Z V P I V W F	Z I P D V W F	Z I P I V W C V	Z V P I P I V W F	Z V P D P D H W
E+1	16	Z V P C V F	Z V P C V I V F	Z V P C W C V F	Z V P C P C V F	Z I U D H P C V	Z I U D H D P C
F-1	17	Z V P C V F	Z V P C V I V F	Z V P W P C V F	Z V P C P C V F	Z V P C I H I O H	Z V P C I U I U
E+1	18	Z V P W V F	Z V P W P W V F	Z V P W P C V F	Z V P C I H I H	Z V P C I U I H	Z V P C I U I U
F-1	19	Z I H I H	Z V P W P W V F	Z V P W H I H	Z V P W U C H	Z I U C U C H	Z V P W U C U C
E+1	20	Z I H C I V F	Z I H C H	Z I H C H C I V F	Z I H C H C I H	Z I U W U W I H	Z I U W U W I H
F-1	21	Z I H C I V F	Z I H C H V F	Z I H C V C I H V	Z I H C U W C I	Z I U W U W C I	Z I U W U W I H
E-1	22	Z V C V C F	Z I V C V C F	Z I H C V C F	Z I H C V C D F	Z I H C H C D	
F-1	23	Z V C V C F	Z C O C F	Z C O C O F	Z C O C O C D F	Z C O C V C D C	Z C O C O C O F
E-1	24	Z C O C F	Z C V C O F	Z C O C O F	Z C O C O C D F	Z I H W H W C O	Z C O C O H W H
F-1	25	Z C D C D F	Z C D C D C F	Z C O C O F	Z I O C O C F	Z C O C O C D F	Z I H W H W C O
E-1	26	Z C D C D F	Z C D C I C D	Z C D C D C D F	Z C O C D C D F	Z C O W O C	Z C O W O W C D
F-1	27	Z C D C D F	Z C D C I C D	Z C D C D C D F	Z C O W C D C D	Z C O W O C	Z C O W O W C D
E-1	28	Z C I W F	Z C D W F	Z C I W I W F	Z C D W D W F	Z C D W K W F	Z C D W D W D
F-1	29	Z C I W F	Z C I W I W F	Z C D W I W F	Z C D W D W F	Z C D W K W F	Z C K W K W F
E-1	30	Z C I W F	Z C I W I W F	Z C D W I W F	Z C D W D W F	Z C D W K W F	Z C K W K W F
F-1	31	Z C D V F	Z C I P F	Z C D V K V F	Z C D P D V F	Z C K P D V F	Z C D P D P F
E-1	32	Z W C W F	Z P W C W F	Z W C I P F	Z P I P F	Z C I P I P F	Z C D P D P F
F-1	33	Z W C W F	Z P W C W F	Z W C I P F	Z P I P F	Z C I P I P F	Z C D P D P F
E-1	34	Z W C W F	Z W C P F	Z W C W C P F	Z W C P V P F	Z P W V P V P F	Z W C P C P V P
F-1	35	Z C I V F	Z W C P F	Z W C P I V F	Z C D H D H V	Z W C P C P I	Z C D H D H W C
E-1	40	Z Gy L F	Z Gy L Z L F	Z Gy L Z L Z Gy	Z Gy L Z L Z Gy		
F-1	50	Z Wg L F	Z Wg L Z Wg L F	Z Wg L Z Wg L	Z Wg L Z Wg L Z Wg L		

Mark F on Tuesday Committee Boat Course Card refers to the Orange Finish Mark (S. I. 25) and may be positioned in the vicinity of the Island Mark / Howth Sound. In the event of Mark F being positioned in Howth Sound, the Spit Mark (S) shall be passed / rounded to starboard.
 All marks are rounded marks except for those in a (box) which are passing marks
 Marks coloured red shall be rounded/passed to port Marks coloured green shall be rounded/passed to starboard
 Courses were designed with the aid of Soft Touch Programmes.



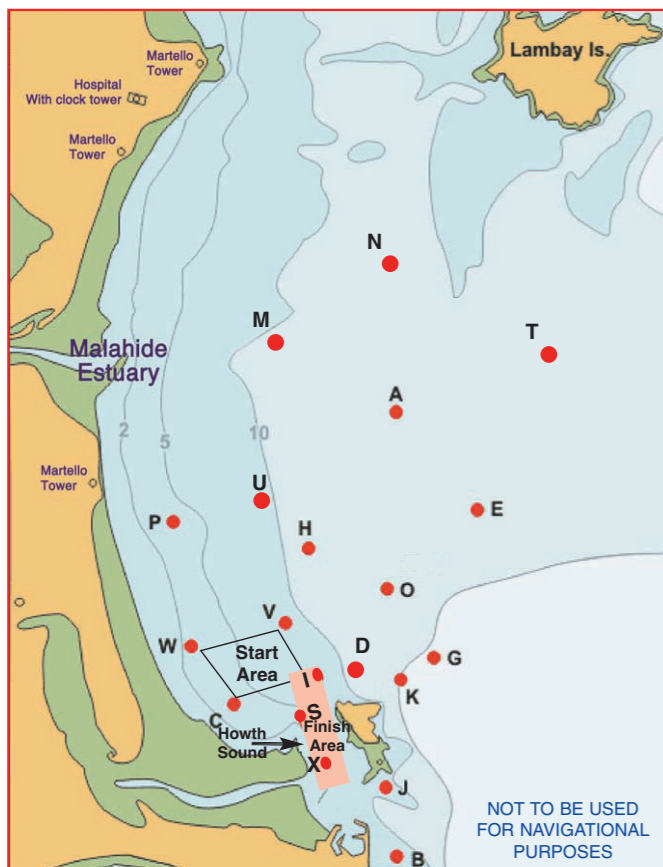
TUESDAY COMMITTEE BOAT COURSE CARD 2009

		1	2	3	4	5	6
	00	Z W I H I F	Z W C P F F	Z U P W P F	Z C I U I H C F	Z C I U P W P C	Z W C I U I U P
	01	Z W C P F F	Z U I H F	Z W C U V H F	Z W C U V H I H	Z W C U C I H I	Z W C U C I H I
	02	Z C H C F	Z W C H C F	Z W C H C V C	Z W C H C H C	Z W C U C H C	Z W C U C H C U
	03	Z C H C F	Z W C H F	Z W C H C V C	Z W C H C H F	Z W C U C H F	Z W C H C H C H
	04	Z C H F	Z W C H F	Z W C H C V C F	Z W C H C H F	Z W C H C V C	Z W I E I E F
F-1	05	Z W C V C F	Z W C O F	Z W C O C V C F	Z W C H W H	Z W C O H W H	Z W C O C O C
E+1	06	Z V W H V F	Z W C O F	Z O H C O F	Z V C O C O F	Z V C O C O C	Z O H C O C O
F-1	07	Z V W H C F	Z V C D C D C F	Z V W H W H C F	Z V C O C O C	Z O H C O C O	Z V W C O C E
E+1	08	Z V C D C F	Z V C D C D C F	Z V W O W V C	Z V C D V W O	Z V W O W O	Z V W C G H W O
F-1	09	Z V C D C F	Z V W V W V W	Z V C D C D V W	Z V W O W V W	Z V W O W O C	Z V W O W O C
E+1	10	Z V W I C F	Z D W D C F	Z V W D W I C F	Z D V W D W I	Z V W D W K C	Z V W D W D V
F-1	11	Z V W I C F	Z V W D V C F	Z V W I W I C F	Z D V W D W I	Z V W D W K C	Z V W D W D V
E+1	12	Z V W I C F	Z V W I W I C F	Z V W I W I C F	Z V W D W D C F	Z V W D W D W I	Z V W D W D V
F-1	13	Z P I V C F	Z H P I V C F	Z H P D V C F	Z H P D V D V C	Z V P D O U O	Z H P D P D V
E+1	14	Z V W C W C W	Z H P I V W F	Z H P D V W F	Z V P I V W C V	Z I P I P I V W F	Z V P D P D H W
F-1	15	Z V W C V W F	Z V P I V W F	Z I P D V W F	Z I P I V W C V	Z V P I P I V W F	Z V P D P D H W
E+1	16	Z V P C V F	Z V P C V I V F	Z V P C W C V F	Z V P C P C V F	Z I U D H P C V	Z I U D H D P C
F-1	17	Z V P C V F	Z V P C V I V F	Z V P W P C V F	Z V P C P C V F	Z V P C I H I O H	Z V P C I U I U
E+1	18	Z V P W V F	Z V P W P W V F	Z V P W P C V F	Z V P C I H I H	Z V P C I U I H	Z V P C I U I U
F-1	19	Z I H I H	Z V P W P W V F	Z V P W H I H	Z V P W U C H	Z I U C U C H	Z V P W U C U C
E+1	20	Z I H C I V F	Z I H C H	Z I H C H C I V F	Z I H C H C I H	Z I U W U W I H	Z I U W U W I H
F-1	21	Z I H C I V F	Z I H C H V F	Z I H C V C I H V	Z I H C U W C I	Z I U W U W C I	Z I U W U W I H
E-1	22	Z V C V C F	Z I V C V C F	Z I H C V C F	Z I H C V C D F	Z I H C H C D	
F-1	23	Z V C V C F	Z C O C F	Z C O C O F	Z C O C O C D F	Z C O C V C D C	Z C O C O C O F
E-1	24	Z C O C F	Z C V C O F	Z C O C O F	Z C O C O C D F	Z I H W H W C O	Z C O C O H W H
F-1	25	Z C D C D F	Z C D C D C F	Z C O C O F	Z I O C O C F	Z C O C O C D F	Z I H W H W C O
E-1	26	Z C D C D F	Z C D C I C D	Z C D C D C D F	Z C O C D C D F	Z C O W O C	Z C O W O W C D
F-1	27	Z C D C D F	Z C D C I C D	Z C D C D C D F	Z C O W C D C D	Z C O W O C	Z C O W O W C D
E-1	28	Z C I W F	Z C D W F	Z C I W I W F	Z C D W D W F	Z C D W K W F	Z C D W D W D
F-1	29	Z C I W F	Z C I W I W F	Z C D W I W F	Z C D W D W F	Z C D W K W F	Z C K W K W F
E-1	30	Z C I W F	Z C I W I W F	Z C D W I W F	Z C D W D W F	Z C D W K W F	Z C K W K W F
F-1	31	Z C D V F	Z C I P F	Z C D V K V F	Z C D P D V F	Z C K P D V F	Z C D P D P F
E-1	32	Z W C W F	Z P W C W F	Z W C I P F	Z P I P F	Z C I P I P F	Z C D P D P F
F-1	33	Z W C W F	Z P W C W F	Z W C I P F	Z P I P F	Z C I P I P F	Z C D P D P F
E-1	34	Z W C W F	Z W C P F	Z W C W C P F	Z W C P V P F	Z P W V P V P F	Z W C P C P V P
F-1	35	Z C I V F	Z W C P F	Z W C P I V F	Z C D H D H V	Z W C P C P I	Z C D H D H W C
E-1	40	Z Gy L F	Z Gy L Z L F	Z Gy L Z L Z Gy	Z Gy L Z L Z Gy		
F-1	50	Z Wg L F	Z Wg L Z Wg L F	Z Wg L Z Wg L	Z Wg L Z Wg L Z Wg L		

Mark F on Tuesday Committee Boat Course Card refers to the Orange Finish Mark (S. I. 25) and may be positioned in the vicinity of the Island Mark / Howth Sound. In the event of Mark F being positioned in Howth Sound, the Spit Mark (S) shall be passed / rounded to starboard.
 All marks are rounded marks except for those in a (box) which are passing marks
 Marks coloured red shall be rounded/passed to port Marks coloured green shall be rounded/passed to starboard
 Courses were designed with the aid of Soft Touch Programmes.

Course Selection-

The first two boards indicate the beat e.g. 07=070°
The third board indicates the column number across the top of the card.



Olympic Style Courses - Row 40

ID	NAME	SHAPE	COLOUR
D	Distance	Round	Orange
Z	Windward	Inflatable	Black
Gy	Gybe	Inflatable	Yellow
L	Leeward	Round	Orange

Row 40 - Course Diagram

Note for Row 40
Mark F (Finish) is positioned up-wind of Last mark.
Mark L positioned downwind of D

Windward / Leeward Style Courses - Row 50

ID	NAME	SHAPE	COLOUR
D	Distance	Round	Orange
Z	Windward	Inflatable	Black
Wg	Off-Set	Inflatable	Yellow
L	Leeward	Round	Orange
4	Leeward	Inflatable	Yellow

Row 50 Course Diagram

Note for Row 50
Mark F (Finish) is positioned up-wind of Last mark.
Mark L positioned downwind of D

Race Marks 2009 - Relative Bearings - Magnetic (approx)

	A	B	C	D	E	G	H	I	J	K	M	N	O	P	Q	S	T	U	V	W	X
A		186°	216°	196°	146°	168°	220°	207°	188°	184°	295°	002°	192°	250°	185°	203°	071°	248°	215°	229°	200°
B	006°		319°	352°	019°	024°	350°	336°	357°	010°	347°	005°	002°	331°	010°	331°	022°	347°	340°	321°	328°
C	036°	139°		084°	058°	081°	032°	077°	126°	092°	004°	025°	058°	346°	121°	111°	047°	015°	038°	327°	127°
D	016°	172°	264°		043°	078°	347°	272°	170°	110°	344°	011°	023°	315°	161°	233°	036°	342°	312°	287°	212°
E	326°	199°	238°	223°		190°	264°	233°	204°	207°	307°	346°	238°	273°	202°	225°	028°	284°	246°	252°	220°
G	348°	204°	261°	258°	010°		305°	263°	214°	236°	325°	354°	306°	297°	211°	249°	021°	314°	281°	275°	239°
H	040°	170°	212°	167°	084°	125°		191°	168°	151°	342°	021°	125°	285°	164°	187°	055°	334°	205°	238°	184°
I	027°	156°	257°	092°	053°	083°	011°		148°	101°	353°	018°	048°	326°	140°	177°	043°	357°	350°	293°	172°
J	008°	177°	306°	350°	024°	034°	348°	328°		018°	345°	006°	004°	326°	062°	317°	026°	345°	334°	312°	305°
K	004°	190°	272°	290°	027°	056°	331°	281°	198°		337°	003°	350°	310°	190°	259°	028°	332°	304°	288°	242°
M	115°	167°	184°	164°	127°	145°	162°	173°	165°	157°		066°	162°	204°	163°	173°	094°	166°	173°	193°	172°
N	182°	185°	205°	191°	166°	174°	201°	198°	186°	183°	246°		187°	225°	184°	196°	125°	214°	202°	214°	194°
O	012°	182°	238°	203°	058°	126°	305°	228°	184°	170°	332°	007°		292°	180°	215°	040°	319°	256°	260°	207°
P	070°	151°	166°	135°	093°	117°	105°	146°	146°	130°	024°	045°	112°		143°	151°	071°	073°	136°	178°	153°
Q	005°	190°	301°	341°	022°	031°	344°	320°	242°	010°	343°	004°	360°	323°		308°	024°	342°	329°	308°	295°
S	023°	151°	291°	053°	045°	069°	007°	357°	137°	079°	353°	016°	035°	331°	128°		039°	357°	353°	309°	166°
T	251°	202°	227°	216°	208°	201°	235°	223°	206°	208°	274°	305°	220°	251°	204°	219°		249°	229°	236°	215°
U	068°	167°	195°	162°	104°	134°	154°	177°	165°	152°	346°	034°	139°	253°	162°	177°	069°		180°	213°	176°
V	035°	160°	218°	132°	066°	101°	025°	170°	154°	124°	353°	022°	076°	316°	149°	173°	049°	000°		264°	171°
W	049°	141°	147°	107°	072°	095°	058°	113°	132°	108°	013°	034°	080°	358°	128°	129°	056°	033°	084°		135°
X	020°	148°	307°	032°	040°	059°	004°	352°	125°	062°	352°	014°	027°	333°	115°	346°	035°	356°	351°	315°	

MARK DESCRIPTIONS/POSITIONS (Approx)

ID	Name	Shape	Colour	Latitude (N) Deg	Latitude (N) Min	Longitude (W) Deg	Longitude (W) Min
A	Apex	Conical	Black	53	26.76	06	03.26
B	Balscadden	Conical	Orange	53	23.30	06	03.26
C	Cush	Conical	Black	53	24.50	06	05.44
D	Dunbo	Conical	Yellow	53	24.73	06	03.85
E	East	Conical	Black	53	26.00	06	02.20
F	Finish	Cylindrical	Orange	Between Island Mark and Howth Sound			
G	Garbh	Conical	Black	53	25.00	06	02.32
H	Hub	Conical	Black	53	25.71	06	04.43
I	Island	Conical	Black	53	24.70	06	04.36
J	Thulla	Conical	Black	53	23.80	06	03.40
K	Stack	Conical	Black	53	24.60	06	03.11
M	Malahide	Conical	Black	53	27.23	06	05.59
N	North	Conical	Black	53	27.99	06	03.40
O	Osprey	Conical	Orange	53	25.41	06	03.52
P	Portmarnock	Conical	Black	53	25.89	06	06.30
Q	Rowan Rocks	IALA	Black	53	23.88	06	03.22
R	South Rowan	IALA	Green	53	23.78	06	03.88
S	Spit	Conical	Black	53	24.35	06	04.48
T	Talbot	Conical	Black	53	27.31	06	01.30
U	Ulysses	Conical	Orange	53	26.22	06	04.97
V	Viceroy	Conical	Orange	53	25.12	06	04.78
W	West	Conical	Black	53	24.96	06	06.07
X	Xebec	Barrel	Black	53	24.12	06	04.33
Z	Zephyr	Inflatable	Black	Upwind of Start Line			

STARTING SEQUENCE / TIMES / TIME LIMITS

Tuesday - Committee Boat Starts (April - 25th August)

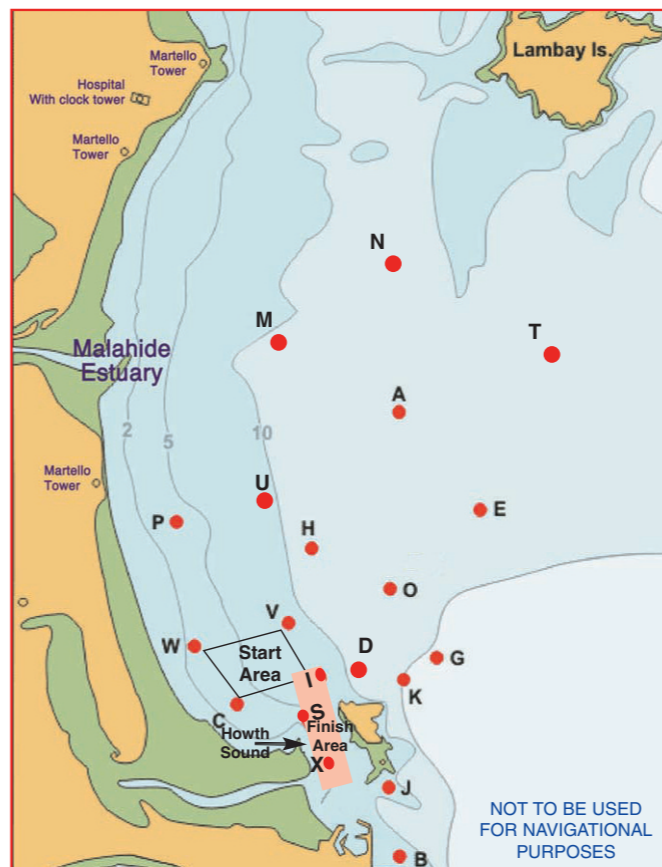
Class	Flag	Start
Etchells	E	1910
SB3	Class Flag	1915
Puppeteer 22	A	1920
Squib	K	1925
17-Footer	C	1930

THE TIME LIMITS ARE AS FOLLOWS

Day	Dates	Time Limit
Tuesday	April, May, June, July, 4 August	2115
Tuesday	11 & 18 August	2045
Tuesday	25 August	2030

Course Selection-

The first two boards indicate the beat e.g. 07=070°
The third board indicates the column number across the top of the card.



Olympic Style Courses - Row 40

ID	NAME	SHAPE	COLOUR
D	Distance	Round	Orange
Z	Windward	Inflatable	Black
Gy	Gybe	Inflatable	Yellow
L	Leeward	Round	Orange

Row 40 - Course Diagram

Note for Row 40
Mark F (Finish) is positioned up-wind of Last mark.
Mark L positioned downwind of D

Windward / Leeward Style Courses - Row 50

ID	NAME	SHAPE	COLOUR
D	Distance	Round	Orange
Z	Windward	Inflatable	Black
Wg	Off-Set	Inflatable	Yellow
L	Leeward	Round	Orange
4	Leeward	Inflatable	Yellow

Row 50 Course Diagram

Note for Row 50
Mark F (Finish) is positioned up-wind of Last mark.
Mark L positioned downwind of D

Race Marks 2009 - Relative Bearings - Magnetic (approx)

	A	B	C	D	E	G	H	I	J	K	M	N	O	P	Q	S	T	U	V	W	X
A		186°	216°	196°	146°	168°	220°	207°	188°	184°	295°	002°	192°	250°	185°	203°	071°	248°	215°	229°	200°
B	006°		319°	352°	019°	024°	350°	336°	357°	010°	347°	005°	002°	331°	010°	331°	022°	347°	340°	321°	328°
C	036°	139°		084°	058°	081°	032°	077°	126°	092°	004°	025°	058°	346°	121°	111°	047°	015°	038°	327°	127°
D	016°	172°	264°		043°	078°	347°	272°	170°	110°	344°	011°	023°	315°	161°	233°	036°	342°	312°	287°	212°
E	326°	199°	238°	223°		190°	264°	233°	204°	207°	307°	346°	238°	273°	202°	225°	028°	284°	246°	252°	220°
G	348°	204°	261°	258°	010°		305°	263°	214°	236°	325°	354°	306°	297°	211°	249°	021°	314°	281°	275°	239°
H	040°	170°	212°	167°	084°	125°		191°	168°	151°	342°	021°	125°	285°	164°	187°	055°	334°	205°	238°	184°
I	027°	156°	257°	092°	053°	083°	011°		148°	101°	353°	018°	048°	326°	140°	177°	043°	357°	350°	293°	172°
J	008°	177°	306°	350°	024°	034°	348°	328°		018°	345°	006°	004°	326°	062°	317°	026°	345°	334°	312°	305°
K	004°	190°	272°	290°	027°	056°	331°	281°	198°		337°	003°	350°	310°	190°	259°	028°	332°	304°	288°	242°
M	115°	167°	184°	164°	127°	145°	162°	173°	165°	157°		066°	162°	204°	163°	173°	094°	166°	173°	193°	172°
N	182°	185°	205°	191°	166°	174°	201°	198°	186°	183°	246°		187°	225°	184°	196°	125°	214°	202°	214°	194°
O	012°	182°	238°	203°	058°	126°	305°	228°	184°	170°	332°	007°		292°	180°	215°	040°	319°	256°	260°	207°
P	070°	151°	166°	135°	093°	117°	105°	146°	146°	130°	024°	045°	112°		143°	151°	071°	073°	136°	178°	153°
Q	005°	190°	301°	341°	022°	031°	344°	320°	242°	010°	343°	004°	360°	323°		308°					